

# Linn-Mar Community School District

2020-21

Return to Learn Plan

*This is a draft document subject to change.*

*Last updated: 7/23/20*



Inspire Learning. **Unlock Potential. Empower Achievement.**

# Outline

## ON-SITE

- Student Learning.....4
- Face Coverings.....5
- Temperature Screenings.....6
- Reporting COVID-19 Symptoms/Cases.....7
- Technology.....8
- Transportation.....9
- Arrival/Drop-off Procedures.....10
- Volunteers/Visitors.....11
- Meal Times.....12
- Classroom Structure/Layout.....13
- Hallways/Passing Times.....14
- Recess.....15
- Large Group Gatherings and Assemblies.....16
- Cleaning of Facilities.....17
- Signage.....18

## HYBRID

- Option A: Family Choice Model.....20
- Option B: District Decision .....21

## ONLINE

- Exclusive Online Learning.....23
- Attendance and Technology.....24
- Questions/Comments.....25





# ON-SITE



## ON-SITE

Inspire Learning. **Unlock Potential. Empower Achievement.**

# Student Learning

**STUDENTS** in grades PreK-12 will return to school **on-site** at the start of the 2020-21 school year.

Regular, full days of school will be held with modifications implemented for student and staff safety.

**Families that are not comfortable returning to on-site school for COVID related reasons can apply to participate in online learning as part of the Hybrid Option A: Family Choice Model detailed on page 20.**



**ON-SITE**

Inspire Learning. **Unlock Potential. Empower Achievement.**

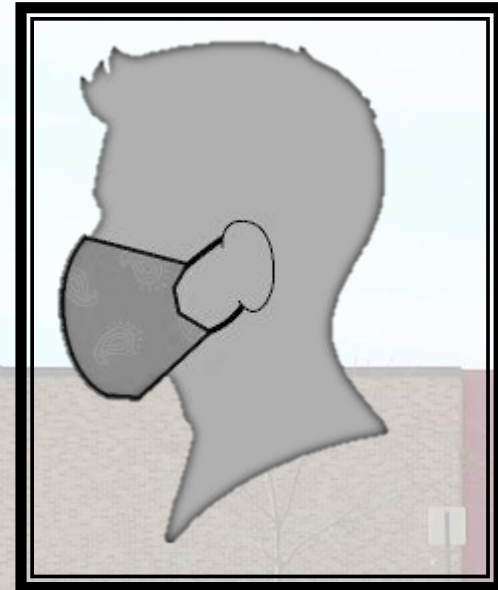
# Face Coverings

**STUDENTS** and **STAFF** will be required to wear a face covering unless social distancing can be practiced.

Face coverings will be required for K-12 grades and encouraged for PreK.

The district will provide:

- One mask per student
- One mask and one face shield per staff member.



**ON-SITE**

Inspire Learning. **Unlock Potential. Empower Achievement.**

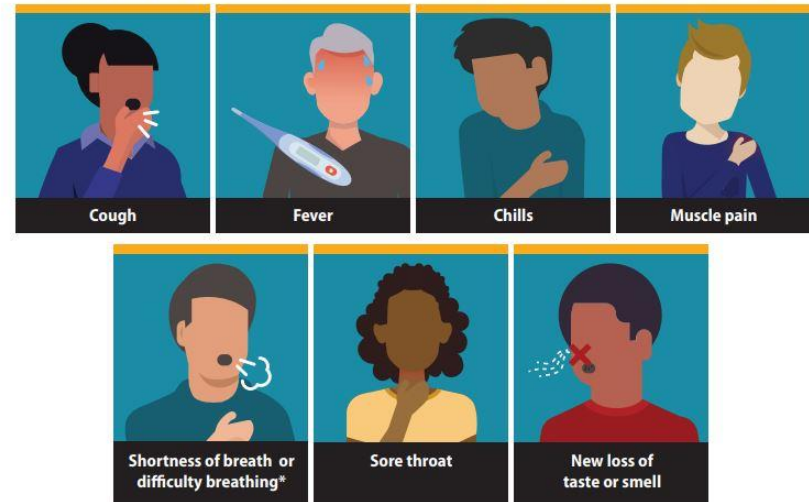
# Temperature Screenings

**STUDENTS** will be required to have their temperatures checked at home by their parents/guardians prior to reporting to school.

**STAFF** will be required to check their temperatures before reporting to work.

## Symptoms of Coronavirus (COVID-19)

Know the symptoms of COVID-19, which can include the following:



**ON-SITE**

Inspire Learning. **Unlock Potential. Empower Achievement.**

# Reporting of COVID Symptoms/Cases

Linn-Mar will follow the guidelines from the Linn County Public Health in regards to student attendance.

*“Students that are identified to have a positive case of COVID-19 will be asked to self-isolate at home for 14 days. Anyone that was within 6 feet of this individual for 15 minutes or longer, will also be asked to self-isolate at home for 14 days.” Linn County Public Health*

**STUDENTS** who are exhibiting COVID symptoms or are diagnosed positive must immediately notify their building’s nurse or health assistant.

*Please note: More information will be provided at a later time as we receive further direction from local health officials.*



**ON-SITE**

Inspire Learning. **Unlock Potential. Empower Achievement.**

# Technology

Every student will be assigned a learning device to help limit the exposure to Covid-19.

- PK-K grade students will be assigned an iPad.
- 1st-12th grade students will be assigned a laptop.

If a student is self-isolating or if school moves to exclusive online learning, students will be able to take these devices home to continue their learning online.

*Devices will be returned to the school district at the end of the school year.*



**ON-SITE**

Inspire Learning. **Unlock Potential. Empower Achievement.**



# Transportation

All students will have assigned seating and will be required to wear face coverings on the bus.

Buses will be disinfected after each route and bus capacity will be reduced to approximately 60%. Windows and vents will be opened to allow for air circulation whenever possible.

Hand sanitizer stations will be available on all buses.

*Please note: Routes may need to be adjusted if there is a shortage of drivers.*



**ON-SITE**

Inspire Learning. **Unlock Potential. Empower Achievement.**

# Arrival/Drop-Off Procedures

Parents will not be allowed to exit the vehicles during pick-up/drop-off.

Additional building entrances will be available to limit lines and crowding.

There will be designated drop-off locations for parents of student walkers.



**ON-SITE**

Inspire Learning. **Unlock Potential. Empower Achievement.**

# Volunteers/Visitors

Non-essential visitors will not be allowed in the school buildings at this time.

This includes but not limited to: volunteers, classroom guests, visits by family members, lunch visitors, non-essential business visits such as classroom observations etc.

Please note: This also includes if you are a new family in the district, and looking to register your child as a student at Linn-Mar. Please visit our [website](#) as **registration will only be online this year.**



**ON-SITE**

Inspire Learning. **Unlock Potential. Empower Achievement.**

# Meal Times

Students will eat meals in the cafeterias abiding by social distancing guidelines as much as possible. Additional areas (i.e. outdoor dining) may be available to address social distancing needs.

Meal times will be staggered and self-serve stations will be discontinued.



*Please note: More information will be provided at a later time as we receive further guidance and direction.*



**ON-SITE**

Inspire Learning. **Unlock Potential. Empower Achievement.**

# Classroom Structure/Layout

Classrooms will be restructured to abide by social distancing guidelines as much as possible.

Students will be seated facing forward to limit exposure and all couches, bean bag chairs, throw cushions, etc., will be removed from the classrooms.



**ON-SITE**

Inspire Learning. **Unlock Potential. Empower Achievement.**

# Hallways/Passing Times

Class times will be staggered as much as possible to accommodate social distancing guidelines during passing times.

Hallways will be one-directional, or clearly marked as two-way.



**ON-SITE**

Inspire Learning. **Unlock Potential. Empower Achievement.**

# Recess

One grade level will have recess at a time to accommodate social distancing guidelines.

Students will be required to wash/disinfect their hands upon re-entering the buildings.



**ON-SITE**

Inspire Learning. **Unlock Potential. Empower Achievement.**

# Large Group Gatherings and Assemblies

When possible, class sizes will be reduced for physical education, band, choir, and orchestra.

Student assemblies will not be held.

The number of students will be limited in common areas.



**ON-SITE**

Inspire Learning. **Unlock Potential. Empower Achievement.**



# Cleaning of Facilities

Increased emphasis will be placed on cleaning and disinfecting schools on a daily and weekly basis.

Additional cleaning and sanitizing procedures will be in place throughout the school year. Examples include: Hand sanitizers, disinfecting wipes, physical barriers added in office areas, drinking fountains turned off and increased time for student handwashing.



*Please note: More information will be provided at a later time as we receive further guidance and direction from local health officials.*

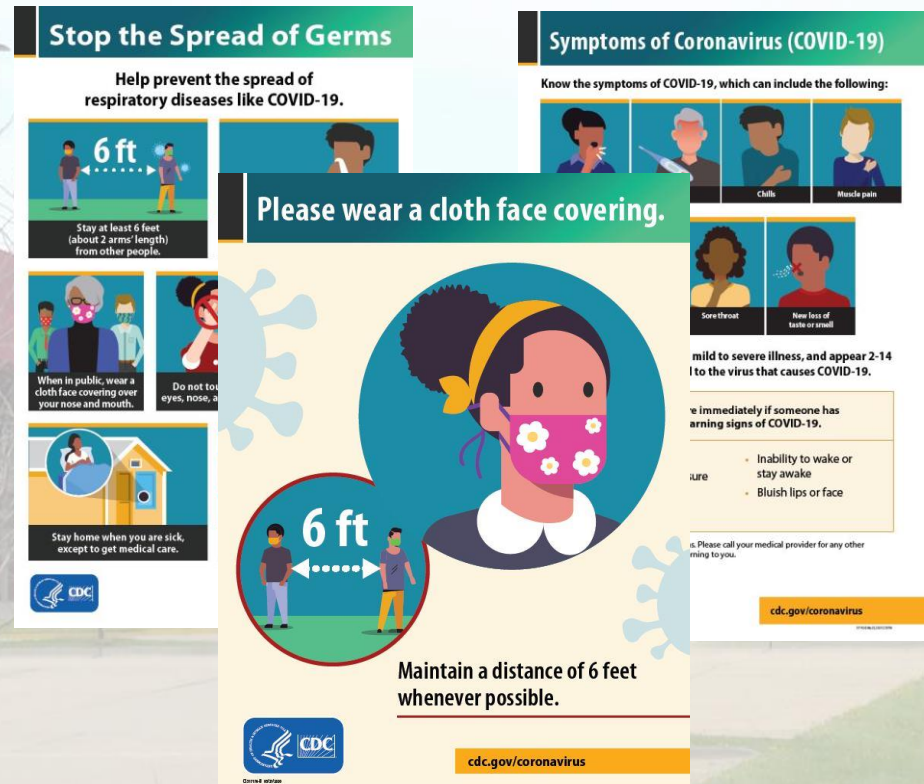


**ON-SITE**

Inspire Learning. **Unlock Potential. Empower Achievement.**

# Signage

All district buildings will have signs clearly posted regarding handwashing, symptoms, face coverings, visitor policy, and lunch procedures.



**ON-SITE**

Inspire Learning. **Unlock Potential. Empower Achievement.**



# HYBRID



## HYBRID

Inspire Learning. **Unlock Potential. Empower Achievement.**

# Hybrid Option A: Family Choice Model

Under this hybrid plan, Linn-Mar schools are open and are offering on-site learning, however, an online learning option is available for K-12 grade students that would like to choose an alternative setting.

Meaning, families that are not comfortable returning to on-site school for COVID related reasons can apply to participate in online learning as part of this hybrid model. Since school is open, this online choice option would be classified under our Hybrid learning plan.

Linn-Mar will provide eligible students with online learning taught by a certified Linn-Mar teacher.

To apply for this hybrid option, [please click here.](#)



**HYBRID**

Inspire Learning. **Unlock Potential. Empower Achievement.**

# Hybrid Option B: District Decision

If the district needs to reduce the number of students on-site, this Hybrid model may be implemented.

Linn-Mar schools will have students in PreK-12<sup>th</sup> grades attend school on-site learning however students would rotate on alternating days and/or weeks to reduce the number of students on-site at one time.

Cohort sizes would be reduced.

Students would attend school on-site 50% and 50% online.

*Please note: More information will be provided at a later time on the details of this hybrid model.*



**HYBRID**

Inspire Learning. **Unlock Potential. Empower Achievement.**



# ONLINE



Inspire Learning. **Unlock Potential. Empower Achievement.**

# Exclusive Online Learning

The determination of whether the district exclusively moves from the **ON-SITE** to the **ONLINE** Learning Plan is made by Governor Kim Reynolds, the Iowa Department of Public Health, and/or the Linn-Mar Board of Directors.



**ONLINE**

Inspire Learning. **Unlock Potential. Empower Achievement.**

# Attendance and Technology

**ATTENDANCE:** will be mandatory and recorded.

- PreK-8 grade students will receive online learning via Schoology.
- 9-12 grade students will receive online learning via PowerSchool Learning.

Any high school courses taken by middle school students will be available through PowerSchool Learning.

**TECHNOLOGY:** Every student will be assigned a learning device.

- PreK-K grade students will be assigned an iPad.
- 1st-12th grade students will be assigned a laptop.
- If access to the internet is a concern, [please click here.](#)



**ONLINE**

Inspire Learning. **Unlock Potential. Empower Achievement.**



# Questions/Comments

For questions or comments about the Linn-Mar Community School District 2020-21 Return to Learn Plan, please contact our Communications/Media Office at [info@linnmar.k12.ia.us](mailto:info@linnmar.k12.ia.us)

